

TD-CNV-E1-SubE1+ETH

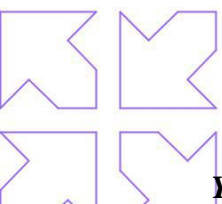


Overview

TD-CNV –E1-SubE1 +ETH PCM Add/Drop Multiplexer gives two E1 interface and one Ethernet interface. The main E1 (E1-1) line is 2Mbps; it is divided into one sub (E1-2) E1 line and one Ethernet line. This equipment can select several timeslots for Ethernet line, using E1 timeslots sufficiently. The sub E1 port can link transmission or terminal device, such as Optical transmission device, PABX etc; it can also link other PCM Add/Drop multiplexer. This device has high performance and low price. It utilizes the idle E1 timeslot to transmit Ethernet data, fully use 2M bandwidth.

Features

- The 2Mbps E1 line divided into one E1 line and one Ethernet line.
- E1 line code type is HDB3, fully compatible with ITU-T G.703; jitter feature is better than G.823.
- Ethernet Standards fully compatible with IEEE 802.3.
- E1 interface, 75 ohm (unbalanced) ,BNC connector
- Line port speed: 2.048Mbps+/-50ppm, data transmit speed support N*64k (N=1~32); fractional timeslots can be selected
- E1 fractional/ unframed optional
- Ethernet port 10/100Mbps, Full/Half Duplex auto-negotiation.
- 10/100Base-T LAN Interface on RJ-45 connector
- Clock mode: Internal clock, line recovered clock from E1-1 or E1-2 line
- Comprehensive LED indicators on front panel, convenient for the diagnosis of equipment working state
- -48VDC& 220VAC power supply selectable



Specifications

- **E1 interface**

One UP port, one DOWN port

Data rate:

Unframed: 2Mbps

Fractional: $N \times 64\text{Kbps}$, $N=1 \sim 31$

Code type: HDB3

Standard: G.703, G.704, G.823, G.742

75Ω unbalanced

Connector: BNC (75Ω)

Number of Port: 2

- **Ethernet Interface**

10/ 100M, full/ half duplex,

auto-negotiation Connector:

RJ45

Number of Port: 1

- **LED Indicator**

PWR: Power LINK:

Ethernet link

ACT: Ethernet receive or transmit data

LOOP: E1 loop

RA: The other device alarm

LOF1/LOF2: E1 signal lose synchronization E1:

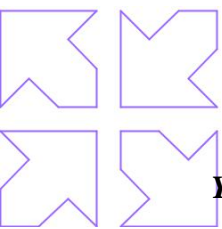
E1 link

- **DIP Switch**

Clock mode select: Internal clock; Recovered from E1-1 or E1-2 E1-2

(sub E1) enables or disable

Local E1 loop; Remote E1 loop



- **Size**

Standalone: (Unit: mm)

200 (W) ×145 (D) ×35 (H)

- **Power**

INPUT:

AC Power: 100V-240V, 0.4-0.2A, 50-60 Hz DC

Power: -48V, 0.4A

Power:

<5W for each standalone

- **Environment**

Operation

Temperature: 0°C ~ 50°C;

Humidity: 0% ~ 90%(non-condensed)

Air pressure: 86kPa ~ 106 kPa.

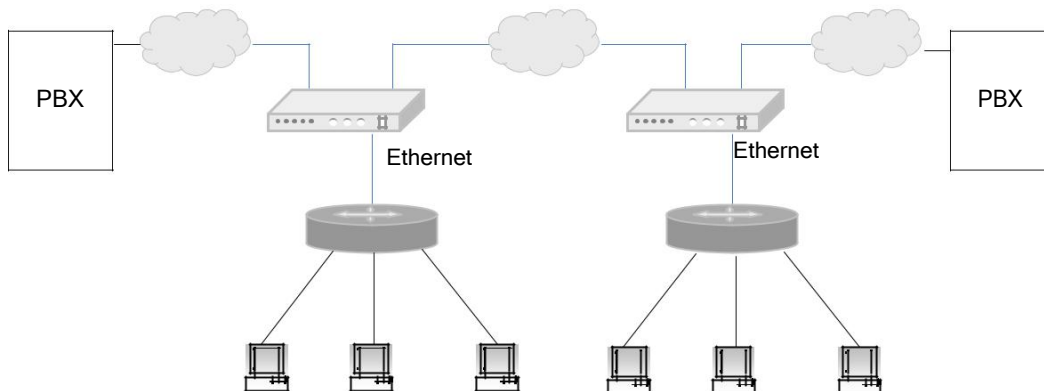
Transport and store

Temperature: -20°C ~ 60°C;

Humidity: 0% ~ 90%(non-condensed)

Air pressure: 86kPa ~ 106 kPa.

Typical Application



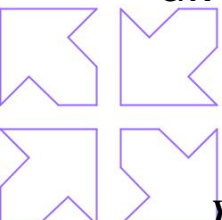
Note: When device Ethernet port link with PC, use MDI-X twisted-pair line; link with HUB or Switch, please select MDI twisted-pair line.

Order Information

Model: TD-CNV-E1-SUBE1 Eth

P/N:

TD-CNV-E1-SUBE1 Eth AC Standalone Device, 220VAC Power input
TD-CNV-E1-SUBE1 Eth DC Standalone Device, -48V DC Power input



Your Route to The Destination