

## TD-CNV ETH-16E

## 16E1 TO Ethernet Protocol Converter

**Overview**

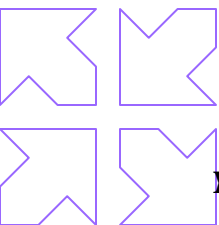
TD-CNV ETH16 is the most newly promoted product that can convert 1-16E1 to 10/100Base-T Ethernet, and vice versa. This protocol converter could support 1-16E1 to Ethernet, which extend the bandwidth to 32.768Mbps. It is widely used in two LAN connecting, remote monitor and video broadcasting.

**Features**

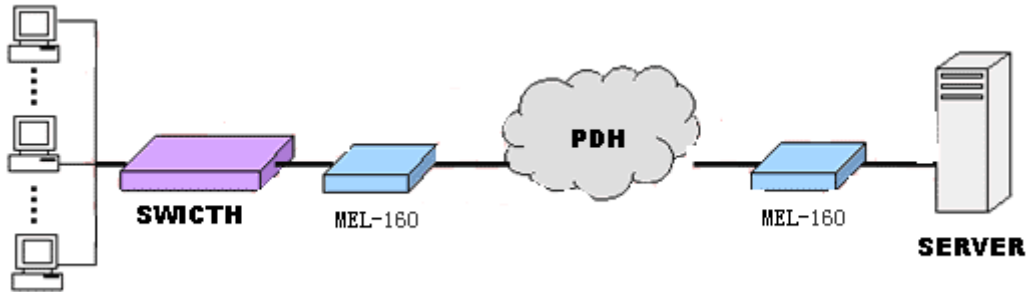
- ◆ Fully compatible with IEEE802.3, ITU-T G703, G704 and G823
- ◆ Enable any group of CH1-CH16 E1 channel to transmit the data at will
- ◆ Extend the bandwidth to 32.768Mbps when using 8E1 channels
- ◆ Support hot-plug/unplug
- ◆ Support auto-inspection of effective E1 channel without interruption of data transfer.
- ◆ Automatically cut off the E1Channel when it has LOS and AIS alarm, and inform the remote end simultaneously
- ◆ Support remote E1 Loop function
- ◆ Internal power supply, overall power consumption<3w, AC160V-260V

**Specifications**

- 1、 E1 Port
  - Bit rate: 2.048Mbit/s±50ppm
  - Line code: HDB3
  - Standard: in accordance with ITU-T G.703, G.704
  - Connector: BNC connector, line impedance 75ohm
  - Non-support the use of time slots
  - Jitter Performance: compatible with G.742 and G.823
- 2、 Ethernet port
  - Data Rate: 10/100Mbps auto-negotiation
  - Standard: Compatible with IEEE802.3
  - Connector: RJ-45
  - Full duplex auto-negotiation
- 3、 Size: 265mm(W) × 160mm (D) × 44mm (H)

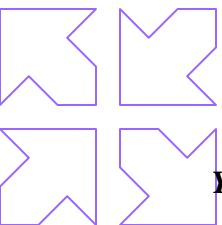


## Typical Application



## Order Information

TD-CNV ETH-16/AC	16E1-10/100BASE-T bridge,DB37,220V
TD-CNV ETH-16/DC	16E1-10/100BASE-T bridge,DB37,-48V
TD-CNV ETH16/AC+DC	16E1-10/100BASE-T bridge,DB37, 220V &-48V



*Your Route to The Destination*