

TD- CNV ETH-4E

4E1 TO Ethernet Protocol Converter

Overview

TD-CNV ETH -4E is the most newly promoted product that can convert 1-4E1 to 10/100Base-T Ethernet, and vice versa. This protocol converter could support 1-4E1 to Ethernet, which extend the bandwidth to 7.68Mbps. It is widely used in two LAN connecting, remote monitor and video broadcasting.



Features

- ◆ Fully compatible with IEEE802.3, ITU-T G703, G704 and G823
- ◆ Enable any group of CH1-CH4 E1 channel to transmit the data at will
- ◆ Extend the bandwidth to 7.68Mbps when using 4E1 channels
- ◆ Support auto-inspection of effective E1 channel without interruption of data transfer.
- ◆ Automatically cut off the E1Channel when it has LOS and AIS alarm, and inform the remote end simultaneously
- ◆ Support remote E1 Loop function
- ◆ 75/120 ohm Optional of E1 channel impedance
- ◆ Internal power supply, overall power consumption<3w, AC160V-260V

Specifications

1、 E1 Port

Bit rate: 2.048Mbit/s±50ppm

Line code: HDB3

Standard: in accordance with ITU-T G.703, G.704

Connector: BNC connector, line impedance 75ohm

Non-support the use of time slots

Jitter Performance: compatible with G.742 and G.823

2、 Ethernet port

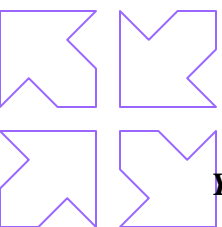
Data Rate: 10/100Mbps auto-negotiation

Standard: Compatible with IEEE802.3

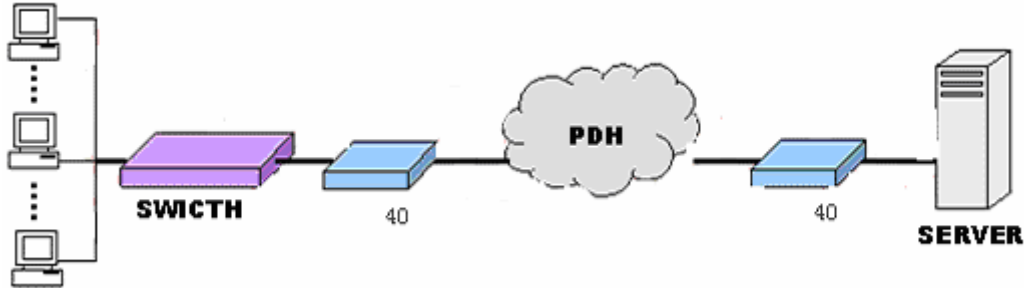
Connector: RJ-45

Full duplex auto-negotiation

3、 Size: 265mm(W) × 160mm (D) × 44mm (H)



Typical Application



Order Information

TD-CNV ETH -4E/AC	4E1-10/100BASE-T bridge, 75Ω&120Ω,,220V
TD-CNV ETH -4E/DC	4E1-10/100BASE-T bridge, 75Ω&120Ω,, -48V
TD-CNV ETH -4E/AC+DC	4E1-10/100BASE-T bridge, 75Ω&120Ω,, 220V &-48V

