

## TG-3100

### Carrier Grade Trunk Gateway



#### Product Overview

TG-3100 series is a carrier-grade NGN trunk gateway. There are four different models with 1/2\*E1/T1. It supports SIP-T/ SIP/ H.323 protocol to connect with SIP-T/SIP/H.323 soft switch, and supports PRI/SS7 signaling protocol to connect with PSTN. Up to 60 channels processing capacity, it guarantees the maximum performance upto 2\*E1/T1 trunk gateway ( G.711/G.723/G.729 codec calls and T.38/Pass-through Fax).

#### Key Benefits

- energy efficiency concurrent processing, up to 60
- Service oriented architecture, rich services , support voice, IP fax and Modem/POS service
- Flexible dial-up rules and operation, in order to adapt to the different work scene.
- Voice codec:  
G.711A/U,G.723.1,G.729A/B, iLBC
- Good compatibility, support Asterisk, Elastix, Freeswitch and Small and medium IPPBX platform

#### Voice & Fax

- G.711A/U law, G.723.1, G.729A/B,iLBC
- Silence Suppression & Detection
- Comfort Noise Generation (CNG)
- Voice Activity Detection (VAD)
- Echo Cancellation (G.168)
- Adaptive (Dynamic) Jitter Buffer
- Call Progress Tone Generation
- Programmable Gain Control
- T.38/Pass-through fax, up to14.4kbps
- Modem
- RFC3407
- FAX/X-FAX
- QoS control: ToS, DS

#### Signal

- PRI/PRA
- ISDN E1/T1
- ITU-T I.431, Q.921, Q.931, ETSI Q.sig
- SS7/No.7
- ITU, ANSI, ETSI, ITU-China,
- MTP layer 1/2/3, ISUP/TUP
- SS7 MTP link management
- SS7 circuit maintenance

## Protocol & IP Features

- SIP-RFC 3261, 3262,3263,3264, 3265,3515,2976,3311
- SDP -RFC 2327
- RTP/RTCP-RFC2198,1889
- SIP-T, RFC3372, RFC3204, RFC3398
- H.323, ITU-T H.323 V4
- SIP domain register
- IP group management
- Trunk priority management
- H.323
- Peer/Access work mode
- IP address/domain authentication
- SIP username/password register to remote

## Call Features

- DTMF : RFC2833, SIP INFO, INBAND
- Back tone/busy tone control
- Digit Map
- Dial rule configuration, max 2000 rules
- Overlap receiving
- Dial time control
- Time slot group management
- E1/T1 port group management

## Maintain & Upgrade

- Web based configuration
- HTTP/Telnet configuration
- Data backup/restore
- Support English and China language
- Firmware upgrade by TFTP
- Web & telnet login password modify
- TACACS Management
- SNMP management
- Syslog: Debug, Info, Error, Warning , Notice
- CDR
- NTP Configuration

## Routing & Num Manipulation

- Many routing way  
PSTN-PSTN, PSTN-IP, IP-IP, IP-PSTN
- Intelligent routing
- Routing time control
- 256 routing
- Caller/callee manipulation
- 128 number manipulation

## Physical Interface

- ISDN Interface: 8E1/T1, G.703, 120Ω RJ-48
- Ethernet Interface:  
FE0(WAN): Service Ethernet interface,  
FE1(LAN): Management Ethernet interface  
10/100M Base-TX RJ45
- Management Interface:  
1 Console, 9600bps

## Physical Properties

- Power backup
- Power: input:100-240V,50-60Hz, 1.1A Max  
output:220 VAC,0.5A
- Power consumption: 25W
- Temperature(operation): 0 °C ~ 45 °C  
(storage): -20 °C ~80 °C
- Operation Humidity: 10%-90% no condensation
- Dimension(w/D/H): 436\*300\*44.5mm(1U)
- Weight: 2.0kg
- Color & material: black, iron box

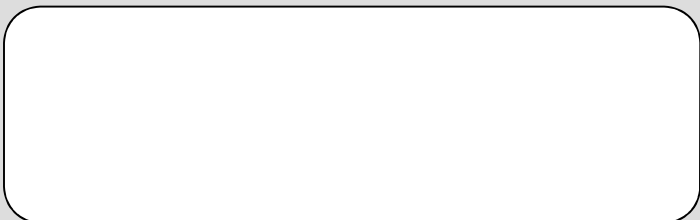
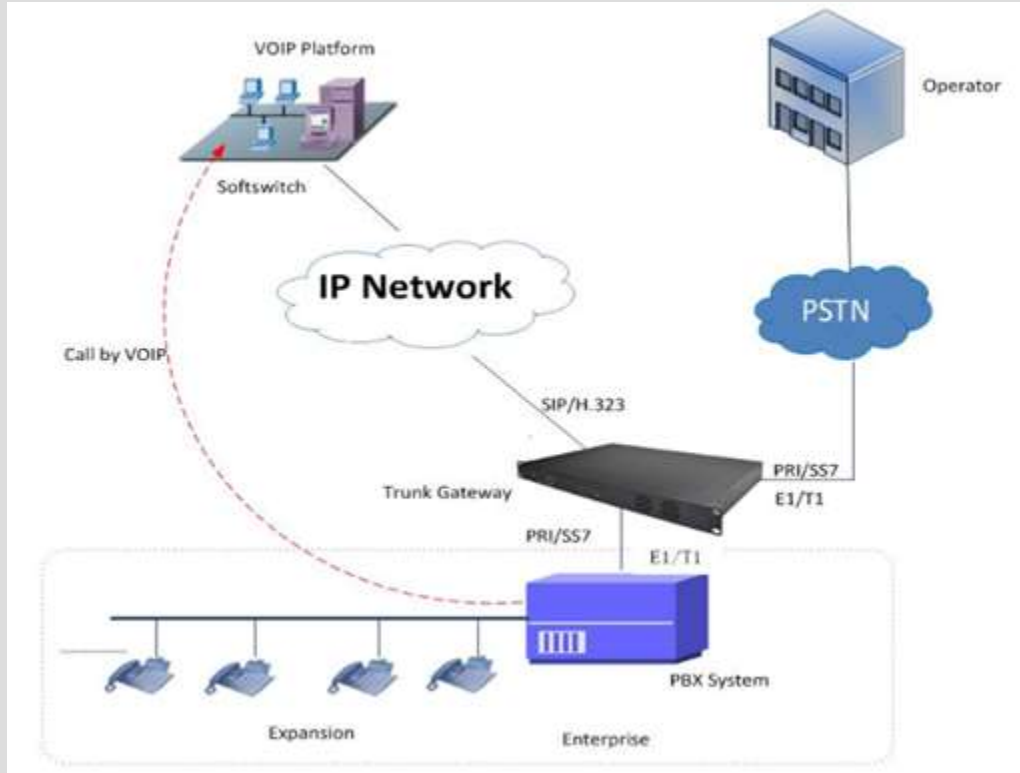
## Network Protocol

IP,TCP, UDP,TFTP, FTP, RTP, RTCP,  
ARP/RARP,ICMP Ping, NTP, SNTP, HTTP, DNS

## Ordering Information

1E1 Gateway: TG-3100-1E1  
2E1 Gateway: TG-3100-2E1

## System Application



*For More details:*  
visit : [www.techroutes.com](http://www.techroutes.com)  
Or contact  
[sales@techroutes.com](mailto:sales@techroutes.com)  
[info@techroutes.com](mailto:info@techroutes.com)