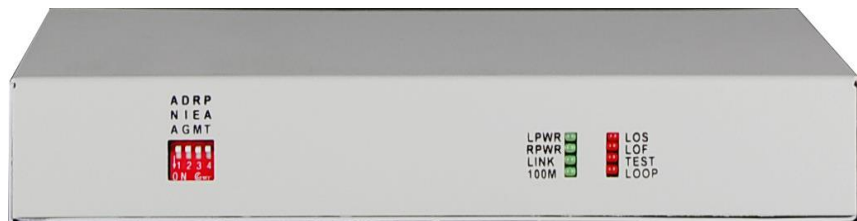


## TD-CNV-E1-4ETH

### Function

TD-CNV-E1-4ETH interface converter is based on FPGA. The device provides the transition between ITU-T G.703 (E1) standard framed E1 interface and 10/100Base-T interface. It is a high capability, self-adaptable long-distance Ethernet bridge. The product is small and low cost. It is widely used in connecting between WAN and LAN, monitoring, etc



TD-CNV-E1-4ETH

### Features

- Based on self -copyright IC
- E1 supports any timeslot set, the rate is 64K-2048K
- Can realize monitor and control of remote equipment, OAM management data did not take up user's timeslot and save E1 bandwidth
- Have the function of E1 interface loop back check, avoid the converter crashed because of interface loop return; Have indicator when the device is power-off or
- E1 line is broken or lose signal;
- Can set the E1 line that not to send the LINK signal to Ethernet interface while E1 line is broken;
- The Ethernet interface supports jumbo frames (1916 Bytes);
- 4Channel 10M/100M Ethernet interface support vlan, can isolate each other to realize communication independently;
- Ethernet interface supports 10M/100M, half/full duplex auto-Negotiation and AUTO-MDIX(crossed line and straightly connected line self-adaptable );
- Provide 2 clock types: E1 master clock and E1 line clock;
- Have three Loop Back Mode: E1 interface Loop Back (ANA)、Ethernet interface Loop Back(DIG)、Command the remote Ethernet interface Loop Back(REM)
- Have pseudo random code test function, easy the installation and maintenance;
- Provide 2 impedances: 75 Ohm unbalance and 120 Ohm balance;
- Have Ethernet monitor self-reset function, the equipment will not dead
- Ethernet interface supports the counters of receiving and transmitting frame, receives wrong frame

- counters.E1 interface supports the counters of receiving wrong frame;
- Realize monitor of remote equipment temperature and voltage from local equipment;
- Support SNMP Network Management;
- Can form the structure: Ethernet E1 Bridge(A) – – E1 Optical Fiber Modem(B) – – Ethernet Optical Fiber Modem (C)

### E1 Interface

- Interface Standard: comply with protocol G.703;
- Interface Rate: n\*64Kbps±50ppm;
- Interface Code: HDB3;
- E1 Impedance: 75Ω (unbalance), 120Ω (balance);
- Jitter tolerance: In accord with protocol G.742 and G.823
- Allowed Attenuation: 0~6dBm

### Ethernet Interface(10/100M)

- Interface rate:10/100 Mbps, half/full duplex auto-negotiation
- Interface Standard:Compatible with IEEE 802.3, IEEE 802.1Q (VLAN)
- MAC Address Capability: 4096
- Connector:RJ45, support Auto-MDIX

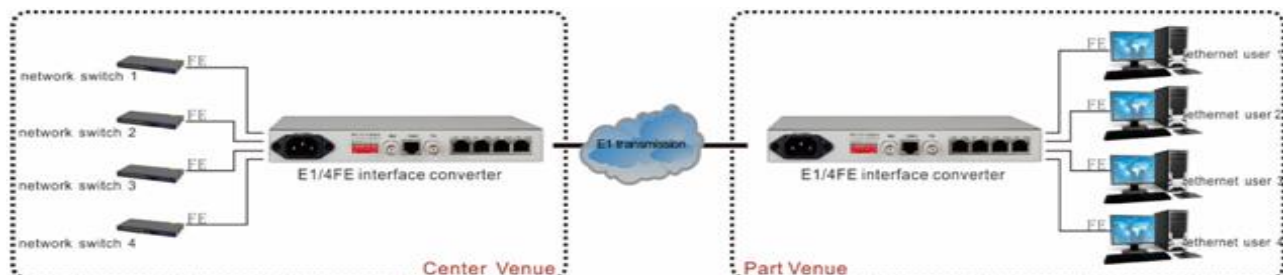
### Working environment

Working temperature: -10°C ~ 50°C  
 Working Humidity: 5%~95 % (no condensation)  
 Storage temperature: -40°C ~ 80°C  
 Storage Humidity: 5%~95 % (no condensation)

### Specifications

Model	<b>TD-CNV-E1-4ETH</b>
Functional Description	1channel framed E1 - 4FE interface converter , With E1 loopback detection function
Port Description	One E1 interface ; 4*FE Interface
Power	Power supply: AC180V ~ 260V ; DC -48V ; DC +24V Power consumption: ≤10W
Dimension	Product Size: 216X140X31mm (WXDXH)
Weight	1.1KG

### Application



Your Route to the Destination